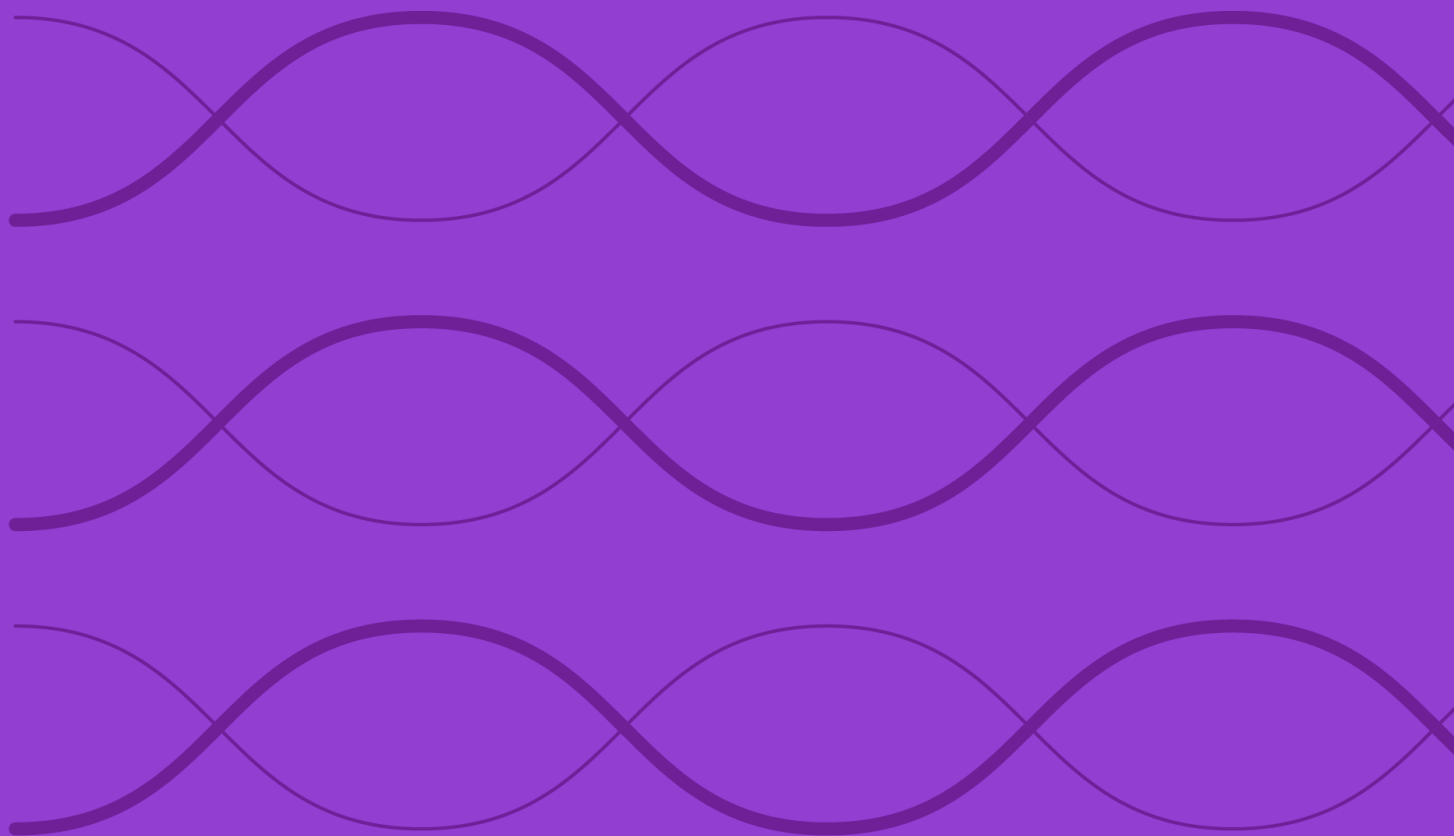


Construction Rules for the Morningstar PitchBook Unicorn Top 20 Vintage 2025 Index



Overview3

Index Construction4

Starting Universe.....4

Eligibility4

Index Pricing5

Morningstar Consolidated Market Prices Overview5

Morningstar Consolidated Market Price Methodology6

Challenges and Limitations of the Morningstar Consolidated Market Pricing Methodology6

Index Maintenance and Calculation.....7

Reconstitution and Rebalancing7

Corporate Actions.....7

Index Calculation and Valuation Data8

Methodology Review and Index Cessation Policy.....8

Data Correction and Precision8

Intraday Index Data Corrections.....8

Index-Related Data and Divisor Corrections8

Computational and Reporting Precision9

Exceptions.....9

Appendixes10

Appendix 1: PitchBook Data.....10

Appendix 2: Caplight10

Appendix 3: Zanbato.....10

About Morningstar Indexes11

Overview

The Morningstar PitchBook Unicorn Top 20 Vintage 2025 Index tracks the performance of late-stage venture-backed companies with a valuation of \$1 billion or more. This index focuses on the largest and most liquid unicorns, providing access to some of the most innovative and fastest growing companies globally. To support replicability, index constituents must meet liquidity requirements. Companies that trade exclusively on forward contracts are excluded. The index constituents do not change, outside of changes derived from corporate actions and liquidity criteria.

The Index utilizes data from PitchBook, Morningstar and third-party vendors Caplight, and Zanbato. For more information on these third-party vendors, refer to Appendices 2, and 3.

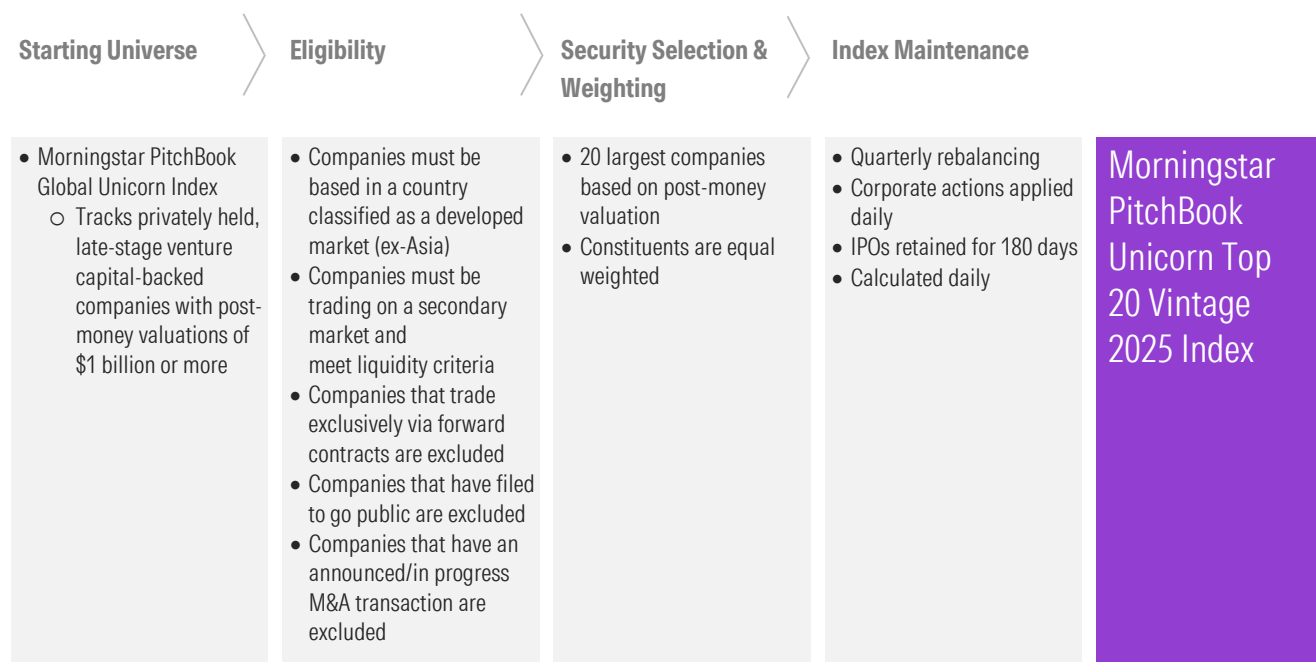
PitchBook, a Morningstar company, is the largest provider of data on private markets. PitchBook provides data, research and analysis on private and public companies. For more information on PitchBook, please refer to Appendix 1.

Index Inception and Performance Start Date

The Index inception date is September 3, 2025, and the performance start date, when the first back-tested Index value was calculated, is December 19, 2014.

Index Construction

Methodology Summary



Starting Universe

At each reconstitution, constituents of the Morningstar PitchBook Unicorn Top 20 Vintage 2025 Index (the “Index”) are derived from the Morningstar PitchBook Global Unicorn Index, which serves as the benchmark index and starting universe for the Index. For more details on benchmark construction, refer to the [Construction Rules for the Morningstar PitchBook Global Unicorn Indexes](#).

PitchBook utilizes press releases, public information and direct outreach to source valuation information. In addition, a dedicated team of researchers also use information from corporate and regulatory filings. Valuations are then calculated using rules-based, formulaic methodologies.

Eligibility

To be eligible for inclusion in the Index, all constituents derived from the starting universe must meet the following criteria at inception:

1. Companies must be assigned to a country¹ classified as a Developed Markets (ex-Asia) country. Classifications are based on Morningstar Indexes Market Classification structure. For more details, refer to the [Morningstar Indexes Market Classification](#).

¹ Country data is sourced from PitchBook.

2. Companies must be trading on secondary markets. New Index constituents with liquidity score² greater than 0.25 are eligible for inclusion, while existing constituents will be eligible for inclusion if their liquidity score is greater than 0.
3. Companies that trade on secondary markets exclusively via forward contracts are excluded.
4. Companies that have filed a registration statement to go public (e.g., Form S-1 or F-1)³ are excluded.
5. Companies that have an announced/in progress M&A transaction⁴ are excluded.

The companies that meet the above eligibility criteria at the time of index inception comprise the eligible universe and will remain unchanged thereafter. However, if an index constituent is no longer actively priced in secondary markets, it will be removed from the Index at its last known price to maintain index continuity.

Liquidity Score

The Liquidity Score measures the ease of tradability of a stock in the secondary markets. A stock that is very liquid has adequate demand from buyers and sellers. For more information on the liquidity score methodology, refer to the [Construction Rules for the Morningstar Liquidity Score for Venture Capital-Backed Companies](#).

Number of Stocks

At each Index reconstitution, the Index aims to select the 20 largest companies from the eligible universe, based on the most recent post-money valuation data available from PitchBook. Companies must also meet all other eligibility criteria, including the liquidity score outlined above. In cases where two or more companies have the same post-money valuation, the company with the highest liquidity score will be selected for inclusion.

Index Weighting

The Index is equally weighted. For more details, refer to the [Morningstar Indexes Calculation Methodology rulebook](#).

Index Pricing

The Index performance is calculated daily using the Morningstar Consolidated Market Price Methodology. The methodology is described below, and a backtested performance summary can be found in Appendix 4.

Morningstar Consolidated Market Prices Overview

The secondary market for venture capital-backed companies involves buying and selling shares of private companies post-primary funding rounds. Unlike public markets, these transactions occur in less regulated environments and typically involve private investors or institutional investors. This market provides liquidity and opportunities for investors to adjust portfolios before a company goes public or is acquired, often through private equity exchanges or direct negotiations. Morningstar sources secondary trading data from two providers, Caplight and Zambato⁵, to calculate daily prices.

² Liquidity score data is sourced from Caplight.

³ Registration information is sourced from Morningstar.

⁴ M&A transaction data is sourced from PitchBook.

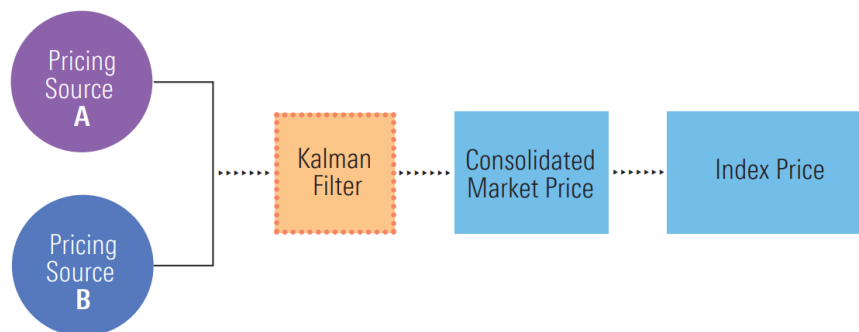
⁵ For more information, refer to Appendices 2 and 3.

Morningstar Consolidated Market Price Methodology

The Morningstar Consolidated Market Price seeks to capture market sentiment for late-stage venture capital-backed companies. The methodology combines secondary market transaction data from multiple sources to achieve a market value. Data used in the Morningstar Consolidated Market Price Methodology is sourced from two contributors:

1. **Caplight:** Caplight collects pre-IPO stock pricing from broker-dealers and institutional investors, ensuring that the data is sanitized and anonymized to maintain privacy. Caplight calculates a company-level price which is a model estimated stock price per share that incorporates the following market factors: venture capital funding rounds; closed secondary market trades; and indication of interest pricing based on bid and ask orders. If neither trades nor orders are available for a company, Caplight's pricing model uses public equity market comparables as a fallback solution. This approach may be considered a proxy for estimating market sentiment as to a company's value as it has been observed that private markets, and Unicorns in particular, demonstrate an extremely high correlation with public markets.
2. **Zanbato:** Zanbato is an SEC-registered Alternative Trading System that aggregates transaction data from its platform and institutional partners to provide up-to-date valuations. Zanbato's pricing incorporates proprietary factors derived from these transactions, including executed transaction prices, current bid and ask prices, inside market prices, and transaction sizes.

To refine this data further, Morningstar applies the Kalman filter, a statistical technique that seeks to reduce "noise" and enhance the consistency of results. This process results in a consolidated, refined price that reflects collective market sentiment. The process is reflected in the image below (where Pricing Sources A and B represent Caplight and Zanbato).



Challenges and Limitations of the Morningstar Consolidated Market Pricing Methodology

1. Despite significant growth in secondary markets, there is no guarantee that an asset manager or investor can precisely replicate the Index portfolio exposure on the basis of the Consolidated Market Prices calculated for the purposes of calculating the Index Price. Factors such as issuer-imposed restrictions on secondary transactions, inconsistent trading activity, wide bid/ask spreads, and lengthy settlement periods may cause discrepancies between the Consolidated Market Prices and the actual prices available to investors.
2. The Consolidated Market Pricing Methodology considers only secondary transactions in company securities and does not incorporate company-sponsored financing rounds.
3. Pricing data received from Caplight and Zanbato is generally structure-agnostic and therefore may not align with the preferred stock prices used in recent financing rounds. Furthermore, the pricing data received by Morningstar (and

consequently the Consolidated Market Prices used in calculation of the Index) may not account for liquidation preferences or other security rights and privileges which may have been offered in financing rounds, thus differing from the experience of institutional investors participating in primary funding rounds.

4. The regulation of secondary marketplaces for private companies is evolving. Regulatory changes may have an impact on market operation.
5. The Morningstar PitchBook Unicorn Top 20 Index aims to select the largest and most liquid unicorns from the eligible universe, but there is a possibility that the eligible universe might not contain the target number of constituents. This scenario could arise if, for example, liquidity in private secondary market becomes broadly limited or centred on a small number of companies. In that case, the number of constituents in the Index may be less than the stated target.
6. While a quality assurance process is in place which is designed to promote the completeness of the data, a vendor may not provide a price for a given day if there is no price update. The Consolidated Market Price uses a waterfall logic to address pricing gaps when daily prices from any vendor are missing for unicorn companies. If a price is missing for five or fewer days, the model forward fills the gap using the most recent available price from the same vendor. If the price is missing for more than five days, it copies daily prices from the other vendor. If both vendors are missing prices, it forward fills both with the latest available data from each vendor.

Index Maintenance and Calculation

Reconstitution and Rebalancing

The Index is rebalanced quarterly in March, June, September, and December on the Monday following the third Friday. If Monday is a holiday, the rebalanced Index is effective on the immediately following business day. During the quarterly rebalance, only secondary market pricing is reviewed. If an existing index constituent lacks secondary market pricing for more than 12 months, it will be removed during that quarterly review, and its weight will be redistributed on a pro-rata basis among the remaining constituents.

A preliminary rebalancing report, or pro forma, indicating expected changes to the composition of the Index due to secondary market pricing will be available for review five business days prior to the rebalancing effective date, excluding the Friday preceding the effective date.

Because this is a static index, constituents do not change outside of corporate actions. Therefore, this index does not reconstitute.

Index files are published according to the Global calendar schedule. For more information, please refer to the [Morningstar Indexes Global Holiday Calendar](#).

Corporate Actions

Corporate actions, including initial public offerings ("IPO"), bankruptcies/out of business statuses, reverse mergers, mergers and acquisitions ("M&A"), and buyouts are reflected daily.

While PitchBook data is used to identify when a constituent undergoes an IPO, Morningstar data is used to calculate the market capitalization of the company at IPO. When a constituent undergoes an IPO, it is held in the portfolio until the end of any specified lockup period and priced using Morningstar data. If no lockup period is specified, the constituent is held in the portfolio for a default of 180 days. The Morningstar Equity Data team maintains the data processes to source and calculate a company market capitalization at IPO using a company's total outstanding shares and price when it becomes publicly available.

Companies that go bankrupt or are out of business are removed from the Index at zero price within two days of the last updated⁴ date. Companies that undergo a reverse merger, M&A, or buyout are removed from the Index at their consolidated market price within two days of the last updated date. When a constituent is removed from the index, the weight of the removed constituent is redistributed on a pro-rata basis across the remaining constituents.

For more information on corporate action handling, refer to the [Morningstar Corporate Actions Methodology for Private Companies](#).

Index Calculation and Valuation Data

Details about equity index level calculations can be found in the [Morningstar Indexes Calculation Methodology](#) rulebook. For details on constituent valuations used for in the Index calculation, please refer the relevant sections above and the [Construction Rules for the Morningstar Consolidated Market Price Methodology for Venture Capital-Backed Companies](#).

Methodology Review and Index Cessation Policy

The Index methodology is reviewed at least annually to review whether it continues to achieve all stated objectives. These reviews consider corporate action treatment, eligibility requirements, and maintenance procedures. Subscribers to the Index will be notified before any methodology changes are made. For more details, refer to the [Morningstar Index Methodology Change Policy](#).

Morningstar Indexes notifies all subscribers and stakeholders of the Index that circumstances might arise that require a material change to, or a possible cessation of, the Index. These circumstances are generally not within Morningstar's control and may include significant changes to the underlying market structure, inadequate access to necessary data, geo-political events, and regulatory changes. In addition, factors such as low usage or methodology convergence may result in the cessation of an index.

Because the cessation of the Index or its benchmark index could disrupt subscriber products that reference this Index, all subscribers are encouraged to have robust fallback procedures if an index is terminated. For more details, refer to the [Morningstar Index Cessation Process](#).

Data Correction and Precision

Intraday Index Data Corrections

Commercially reasonable efforts are made to facilitate the use of accurate data used in index calculations. If incorrect price or corporate action data affects index daily highs or lows, it is corrected retroactively as soon as is feasible.

Index-Related Data and Divisor Corrections

Incorrect pricing and corporate action data for individual issues in the database will generally be corrected upon detection. In addition, an incorrect divisor of an index, if discovered within two days of its occurrence, will be fixed retroactively on the day it is discovered to prevent an error from being carried forward. Commercially reasonable efforts are made to correct an older error subject to its significance and feasibility.

For more details, refer to the [Recalculation Guidelines](#).

Computational and Reporting Precision

For reporting purposes, index values are rounded to two decimal places and divisors are rounded to appropriate decimal places.

Exceptions

The Index methodology, including all documents incorporated therein, are written with the intent of removing, in so far as is feasible, the need for judgment or discretion to be exercised. While Morningstar will seek to apply the Index methodology, market conditions, supervisory, legal, financial, or tax reasons may require an alternative approach to be adopted. A decision to take an alternative approach will be made by the relevant Morningstar Indexes Methodology Committee, and in all instances, the application of a nonstandard process will be reported to the Morningstar Indexes Oversight Committee.

Appendixes

Appendix 1: PitchBook Data

Headquartered in Seattle, PitchBook, a Morningstar company, is the largest provider of data on private markets. PitchBook employs over 1600 employees and covers 3.4 million private companies. PitchBook provides data, research and analysis on private and public companies. The company specializes in researching global M&A, private equity and venture capital investments along with all participating parties, including limited partners, investors, service providers and the professionals involved. PitchBook provides the investment community with a proprietary data platform, research tools and custom analysis to enable better investment decisions.

Appendix 2: Caplight

Caplight provides pricing for pre-IPO company stocks by collecting secondary market transaction data from US-based broker-dealers. Caplight's company-level price is a model estimated stock price per share that incorporates the following market factors: venture capital funding rounds, closed secondary market trades, and indication of interest pricing based on bid and ask orders. If neither trades nor orders are available for a company, Caplight's pricing model uses public equity market comparables as a fallback solution.

Appendix 3: Zanbato

Zanbato is an SEC-registered Alternative Trading System that aggregates transaction data from its platform and institutional partners to provide up-to-date valuations. Zanbato's pricing incorporates proprietary factors derived from these transactions, including executed transaction prices, current bid and ask prices, inside market prices, and transaction sizes.

About Morningstar Indexes

Morningstar Indexes was built to keep up with the evolving needs of investors—and to be a leading-edge advocate for them. Our rich heritage as a transparent, investor-focused leader in data and research uniquely equips us to support individuals, institutions, wealth managers, and advisors in navigating investment opportunities across major asset classes, styles, and strategies. From traditional benchmarks and unique IP-driven indexes to index design, calculation, and distribution services, our solutions span an investment landscape as diverse as investors themselves.

Morningstar Index Methodology Committee

The Morningstar Index Methodology Committee oversees all new index development, index methodology changes, and cessation of indexes for any indexes where Morningstar owns the intellectual property. This committee is also charged with ensuring that indexes align with Morningstar Research principles and values. The group comprises members of the index team with index research, product development, product management, client service, index implementation, and operation expertise who provide the first layer of governance over index design and methodology.

Morningstar Index Operations Committee

The Morningstar Index Operations Committee governs the processes, systems, and exception handling of the day-to-day management of all live indexes, including index rebalancing and reconstitution, restatements, market classification, and contingency management. The committee oversees the annual review of index methodology, as required by the European Benchmarks Regulation (“BMR”), ensuring that methodologies remain fit for purpose and continue to achieve their stated investment objectives. The group comprises members of the index team with data, operations, corporate actions, product development, index launch, client service, and index management experience who provide the first layer of governance over index operations.

Morningstar Index Oversight Committee

The Morningstar Index Oversight Committee is responsible for the index oversight function as per the requirements of the European Benchmarks Regulation (“BMR”), providing independent oversight of all aspects of the governance of benchmark administration as required by the BMR. Its remit extends to all calculation and administration-related business activities of Morningstar Indexes, including administration of Morningstar-owned benchmarks as well as client-owned benchmarks and index calculation. The oversight function is part of the organizational structure of Morningstar but is separate and independent from the index business, index management, and the other index committees.

www.indexes.morningstar.com

Contact Us

indexes@morningstar.com

The information in this document is the property of Morningstar, Inc. Reproduction or transcription by any means, in whole or part, without the prior written consent of Morningstar, Inc., is prohibited. While data contained in this report are gathered from reliable sources, accuracy and completeness cannot be guaranteed. All data, information, and opinions are subject to change without notice. This document may contain back-tested or simulated performances, and the subsequent results achieved by the investment strategy may be materially different.