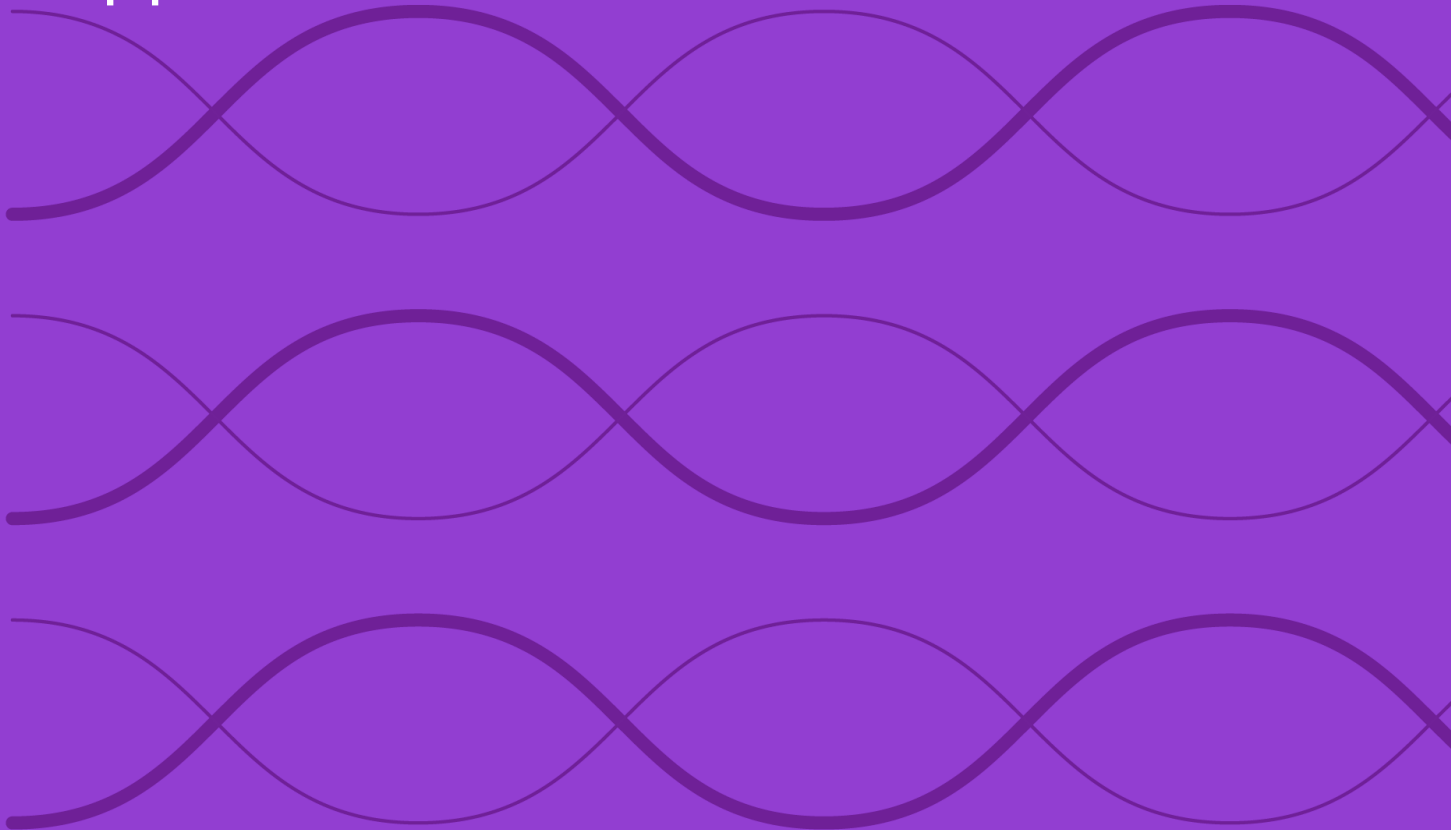


Construction Rules for the
Morningstar® Eurozone
Multi-Industry Select 20 9%
Capped Index



Overview3

Index Construction4

Methodology Summary.....4

Starting Universe.....4

Eligibility4

Portfolio Construction.....5

Index Maintenance and Calculation.....6

Reconstitution and Rebalancing6

Corporate Actions.....6

Index Calculation and Price Data.....6

Methodology Review and Index Decommissioning Policy7

Data Correction and Precision8

Intraday Index Data Corrections.....8

Index-Related Data and Divisor Corrections8

Exceptions.....8

Appendixes9

Appendix 1: Glossary9

Appendix 2: Morningstar® Eurozone Multi-Industry Select 20 Index Decrement Indexes9

Appendix 3: Decrement Levels9

About Morningstar Indexes11

Overview

The Morningstar® Eurozone Multi-Industry Select 20 9% Capped Index is designed to provide exposure to companies in Developed Eurozone region within Banks, Capital Markets, Electrical Equipment & Parts, Luxury Goods and Semiconductor industries. The index applies a 9% cap to individual constituents.

This index does not incorporate environmental, social, or governance criteria.

Index Inception and Performance Start Date

The index inception date is May 20, 2026, and the performance start date, when the first back-tested index value was calculated, is June 19, 2015.

Index Construction

Methodology Summary

Starting Universe

- Morningstar All Cap Target Market Exposure Index

Eligibility

- Securities within Developed Eurozone
- Select only primary share-class
- Largest securities by float adjusted market capitalization within four industry sleeves
 - Sleeve 1: Largest 5 stocks within Semiconductors
 - Sleeve 2: Largest 5 stocks within Banks and Capital Markets
 - Sleeve 3: Largest 5 stocks within Electrical Equipment & Parts
 - Sleeve 4: Largest 5 stocks within Luxury Goods

Portfolio Construction

- Stocks within each sleeve are free-float market cap weighted with a 25% weight applied to each sleeve
- Individual security capping of 9% is applied

Morningstar®
Eurozone Multi-
Industry Select 20 9%
Capped Index

Starting Universe

At each reconstitution, constituents of the Morningstar® Eurozone Multi-Industry Select 20 9% Capped Index are derived from the Morningstar Global All Cap Target Market Exposure Index. For more details on benchmark construction, refer to the construction rules for the [Morningstar Global All Cap Target Market Exposure Index](#).

At each reconstitution, constituents of Morningstar® Eurozone Multi-Industry Select 20 9% Capped Index are derived from “Eligible Universe”.

Eligibility

To be eligible for index inclusion, all constituents must meet the following criteria:

- Within Developed Eurozone
- Industry as determined by GECS Industry Mapping¹ (Industry Code)
 - Semiconductors (31130010, 31130020)
 - Banks (10320010, 10320020)
 - Capital Markets (10330010)
 - Electrical Equipment & Parts (31070060)

¹ [Global Equity Classification Structure | Morningstar Indexes](#)

- Luxury Goods (10280040)

Portfolio Construction

For purposes of portfolio selection and construction,

- Select securities within Developed Eurozone
- Select only primary share-class
- Classify stocks into four industry sleeves
 - Sleeve 1: Semiconductors (31130010, 31130020)
 - Sleeve 2: Banks (10320010, 10320020), Capital Markets (10330010)
 - Sleeve 3: Electrical Equipment & Parts (31070060)
 - Sleeve 4: Luxury Goods (10280040)
- Select 5 largest stocks from each industry sleeve, based on their float adjusted market capitalization
- Stocks within each sleeve are free-float market capitalization weighted, with a 25% weight applied to each sleeve
- A 9% cap on individual security weight is applied. The weight excess of 9% is redistributed within each particular sleeve

Number of Stocks

The indexes target a fixed number of stocks based on a transparent ranking system subject to the application of eligibility criteria at reconstitution. However, if fewer than the targeted number of securities from the starting universe meet eligibility criteria, or if securities are added or deleted as a result of corporate actions after reconstitution, the constituent count may deviate from the targeted number. During reconstitution, if the number of eligible securities is less than the targeted constituent count, all eligible securities are selected. The reconstitution schedule is provided in the "Index Maintenance and Calculation" section. The target count for this index is 20².

Index Weighting

The index is float-adjusted market capitalization-weighted. For more details, refer to the [Morningstar Indexes Calculation Methodology rulebook](#).

For more details, refer to the [Morningstar Indexes Calculation Methodology rulebook](#).

²Sleeves 1, 2 and 4 have been reallocated one-third of the total weight until September 2019 as Electrical Equipment & Parts industry was a new addition to the Global Equity Classification Structure in 2019. The 9% capping has been relaxed in the backtesting period.

Index Maintenance and Calculation

Reconstitution and Rebalancing

The index is reconstituted, where the membership is reset, semi-annually on the third Friday of June and December. Adjustments are implemented after Friday's market close and reflected the following Monday. If Monday is an index holiday, reconstitution is reflected the next business day. The market data used for reconstitution is as of the last trading day of April and October.

The index is rebalanced quarterly on the third Friday of March, June, September, and December. Adjustments are implemented after Friday's market close and reflected the following Monday. If Monday is an index holiday, the rebalance is reflected the next business day. The market data used for rebalancing is as of the last trading day of February, May, August, and November.

Index files are published according to the Global calendar schedule. For more information, please refer to the [Morningstar Indexes Holiday Calendar](#).

Corporate Actions

The treatment of corporate actions will be as per the float-adjusted market capitalization-weighted indexes corporate action methodology. For more details, please refer to the [Morningstar Indexes Corporate Actions Methodology rulebook](#).

Index Calculation and Price Data

Details about index calculations and price data can be found in their respective rulebooks: [Morningstar Indexes Calculation Methodology](#) and [Equity Closing Prices Used for Index Calculation](#).

Methodology Review and Index Decommissioning Policy

The index methodology is continually reviewed to ensure it achieves all stated objectives. These reviews consider corporate action treatment, eligibility requirements, and maintenance procedures. Subscribers to the index will be notified before any methodology changes are made. For more details, refer to the [Morningstar Index Methodology Change Policy](#).

Morningstar Indexes notifies all subscribers and stakeholders of the index that circumstances might arise that require a material change to, or a possible cessation of, the index. These circumstances are generally not within Morningstar's control and may include significant changes to the underlying market structure, inadequate access to necessary data, geo-political events, and regulatory changes. In addition, factors such as low usage or methodology convergence may result in the cessation of an index.

Because the decommissioning of the index or benchmark index could disrupt subscriber products that reference this index, all subscribers are encouraged to have robust fallback procedures in the event an index is decommissioned. For more details, refer to the [Morningstar Index Decommissioning Policy](#).

Data Correction and Precision

Intraday Index Data Corrections

Commercially reasonable efforts are made to ensure the accuracy of data used in real-time index calculations. If incorrect price or corporate action data affects index calculations, corrections are applied prospectively.

Index-Related Data and Divisor Corrections

Index calculation data input defects—such as price, dividends, other mandatory corporate actions, or foreign-exchange rates—that do not affect the index shares and if discovered within two trading days are generally corrected, and the index is recalculated regardless of the performance impact.

Where such index calculation data input defects are discovered after two trading days, an index restatement will typically only occur if the impact on performance is material; otherwise, the correction is applied prospectively.

For more details, refer to the [Recalculation Guidelines](#).

Exceptions

While Morningstar will seek to apply the method described above, the market environment, supervisory, legal, financial, or tax reasons may require an alternative approach to be adopted. A decision to take an alternative approach will be made by the relevant Morningstar Index Methodology Committee, and in all instances, the application of a nonstandard process will be reported to the Morningstar Index Oversight Committee.

Appendixes

Appendix 1: Glossary

Term	Description
Reconstitution	During each reconstitution, the steps mentioned in the index construction process are performed, resulting in membership reset.
Rebalance	During each rebalance, the weights are adjusted for updated free-float and shares outstanding data.

Appendix 2: Morningstar® Eurozone Multi-Industry Select 20 9% Capped Index Decrement Indexes

Index Name	Underlying Index	Base value	Base Date	Performance Inception Date	Inception Date
Morningstar® Eurozone Multi-Industry Select 20 9% Capped Index Decrement 50 Point GR	Morningstar® Eurozone Multi-Industry Select 20 9% Capped Index GR	800	May 19, 2026	Jun. 19, 2015	May 20, 2026
Morningstar® Eurozone Multi-Industry Select 20 9% Capped Index Decrement 5% NR	Morningstar® Eurozone Multi-Industry Select 20 9% Capped Index NR	1000	Jun. 19, 2015	Jun. 19, 2015	May 20, 2026

Appendix 3: Decrement Levels

The index levels are adjusted by deducting a predetermined value of index points from the gross return, or GR, or fixed percentage point from the net return, or NR, levels of the base index. These constant markdowns are applied to the base index daily.

Return Variant of the Base Index	Base Currency	Decrement Type	Decrement Frequency	Decrement Application	Decrement Value	Day Count Convention
Net Total Return Gross Total Return	EUR	Fixed Percentage Decrement or Fixed Point Decrement based on the index version.	Daily	Geometric application for both decrement types.	5% decrement based on the Net Total Return 50-point decrement based on Gross Total Return	*ACT/365

*ACT is the number of calendar days between two calculation days.

Formula for Fixed Point Decrement Geometric Decrement Calculation

$$IV_t = (IV_{t-1} \times (U_t \div U_{t-1})) - (D \times (\text{Act}(t-1, t) \div \text{DayCount}))$$

Where:

IV_t = The value of the Fixed Point Decrement Index for calculation day t

IV_{t-1} = The value of the Fixed Point Decrement Index for day t-1
 U_t = The value of the base Index for calculation day t
 U_{t-1} = The value of the base Index for calculation day t-1
 $Act(t-1,t)$ = Number of calendar days between calculation day t-1 and calculation day t
 D = The Decrement value expressed in Index points
 $DayCount$ = Set to 365

**Formula for Fixed Percentage Decrement
Geometric Decrement Calculation**

$$IV_t = IV_{t-1} \times ((U_t \div U_{t-1}) - (c \times (Act(t-1,t) \div DayCount)))$$

Where:

IV_t = The value of the Fixed Percentage Decrement Index for calculation day t

IV_{t-1} = The value of the Fixed Percentage Decrement Index for day t-1
 U_t = The value of the base Index for calculation day t
 U_{t-1} = The value of the base Index for calculation day t-1
 $Act(t-1,t)$ = Number of calendar days between calculation day t-1 and calculation day t
 c = The Decrement value expressed in Fixed Percentage
 $DayCount$ = Set to 365

About Morningstar Indexes

Morningstar Indexes was built to keep up with the evolving needs of investors—and to be a leading-edge advocate for them. Our rich heritage as a transparent, investor-focused leader in data and research uniquely equips us to support individuals, institutions, wealth managers, and advisors in navigating investment opportunities across major asset classes, styles, and strategies. From traditional benchmarks and unique IP-driven indexes to index design, calculation, and distribution services, our solutions span an investment landscape as diverse as investors themselves.

Morningstar Index Methodology Committee

The Morningstar Index Methodology Committee oversees all new index development, index methodology changes, and cessation of indexes for any indexes where Morningstar owns the intellectual property. This committee is also charged with ensuring that indexes align with Morningstar Research principles and values. The group comprises members of the index team with index research, product development, product management, client service, index implementation, and operation expertise who provide the first layer of governance over index design and methodology.

Morningstar Index Operations Committee

The Morningstar Index Operations Committee governs the processes, systems, and exception handling of the day-to-day management of all live indexes, including index rebalancing and reconstitution, restatements, market classification, and contingency management. The committee oversees the annual review of index methodology as required by the European Benchmarks Regulation (“BMR”), ensuring that methodologies remain fit for purpose and continue to achieve their stated investment objectives. The group comprises members of the index team with data, operations, corporate actions, product development, index launch, client service, and index management experience who provide the first layer of governance over index operations.

Morningstar Index Oversight Committee

The Morningstar Index Oversight Committee is responsible for the index oversight function as per the requirements of the European Benchmarks Regulation (“BMR”), providing independent oversight of all aspects of the governance of benchmark administration as required by the BMR. Its remit extends to all calculation and administration-related business activities of Morningstar Indexes, including administration of Morningstar-owned benchmarks as well as client-owned benchmarks and index calculation. The oversight function is part of the organizational structure of Morningstar but is separate and independent from the index business, index management, and the other index committees.

www.indexes.morningstar.com

Contact Us

indexes@morningstar.com

The information in this document is the property of Morningstar, Inc. Reproduction or transcription by any means, in whole or part, without the prior written consent of Morningstar, Inc., is prohibited. While data contained in this report are gathered from reliable sources, accuracy and completeness cannot be guaranteed. All data, information, and opinions are subject to change without notice. This document may contain back-tested or simulated performances, and the subsequent results achieved by the investment strategy may be materially different.