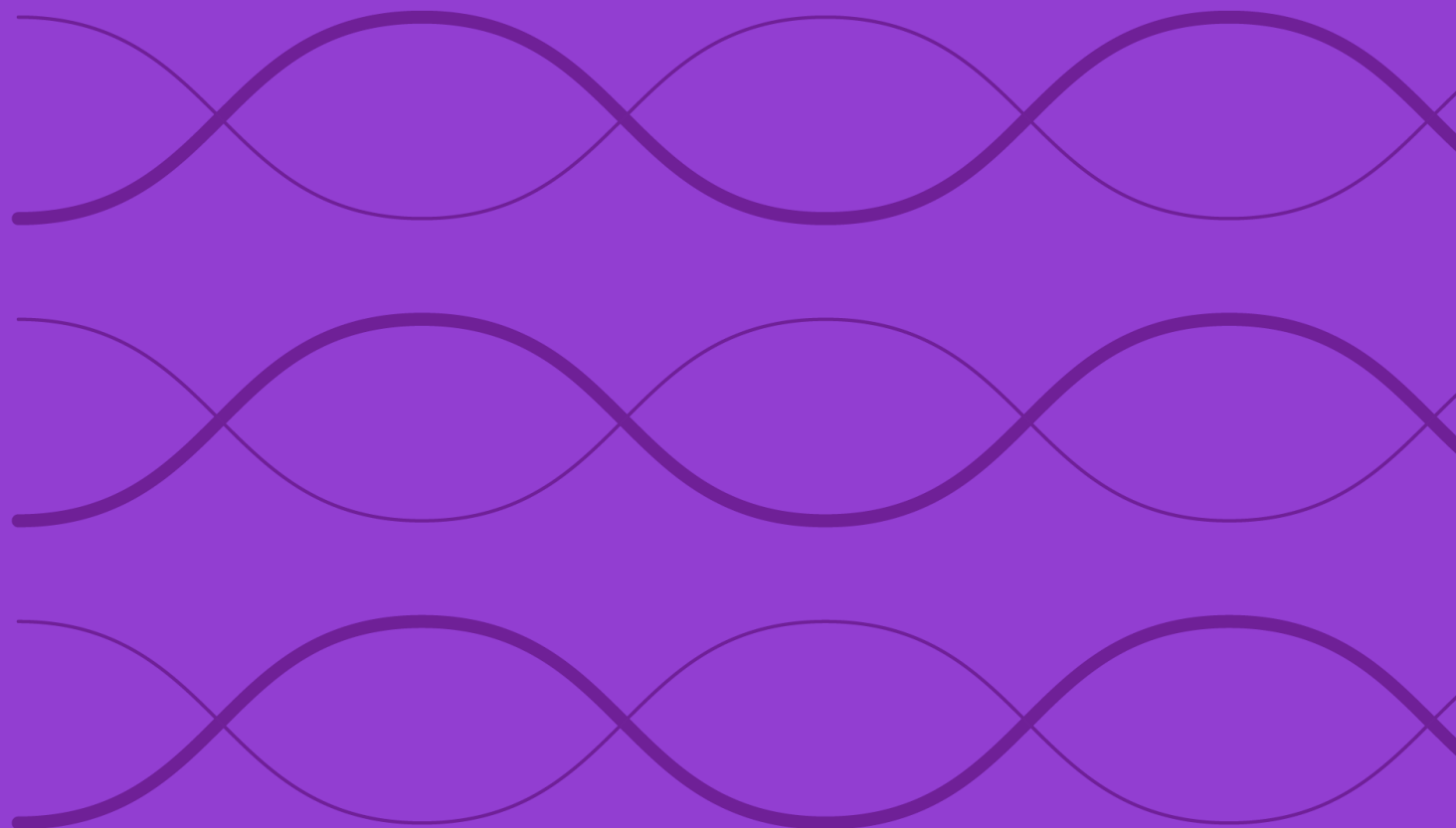


Construction Rules for the Morningstar Korea Lifetime Allocation Aggressive Select Indexes



Overview 3

Index Construction 4

Methodology Summary..... 4

Starting Universe..... 4

Asset Allocation..... 4

Index Maintenance and Calculation..... 5

Reconstitution and Rebalancing 5

Index Calculation and Price Data..... 5

Methodology Review and Index Decommissioning Policy 6

Data Correction and Precision 6

Intraday Index Data Corrections..... 6

Index-Related Data and Divisor Corrections 6

Exceptions..... 6

Appendixes 7

Appendix 1: Modifications to the Rulebook..... 7

Appendix 2: Glossary 7

Appendix 3: Constituent Indexes..... 7

About Morningstar Indexes 8

Overview

The Morningstar Korea Lifetime Allocation Aggressive Select Indexes are broadly diversified indexes that help Korean investors with an aggressive risk tolerance mitigate the challenges related to rising life expectancies, evolving risk appetites, and postretirement income investing. The indexes utilize asset allocation methodologies developed and maintained by Morningstar Investment Management. The Morningstar Korea Lifetime Allocation Aggressive Select Index series utilizes Morningstar Indexes as asset allocation building blocks to support Korean target-date investors according to capital markets assumptions, human capital, and time horizon.

The Morningstar Korea Lifetime Allocation Aggressive Select Index series is comprised of the following indexes:

- Morningstar Korea Lifetime Allocation Aggressive 2030 Select Index
- Morningstar Korea Lifetime Allocation Aggressive 2035 Select Index
- Morningstar Korea Lifetime Allocation Aggressive 2040 Select Index
- Morningstar Korea Lifetime Allocation Aggressive 2045 Select Index
- Morningstar Korea Lifetime Allocation Aggressive 2050 Select Index
- Morningstar Korea Lifetime Allocation Aggressive 2055 Select Index
- Morningstar Korea Lifetime Allocation Aggressive 2060 Select Index
- Morningstar Korea Lifetime Allocation Aggressive Retirement Select Index

The indexes do not incorporate environmental, social, or governance criteria.

Index Inception and Performance Start Date

Index	Performance Start Date	Inception Date
• Morningstar Korea Lifetime Allocation Aggressive 2030 Select Index	July 1, 2016	July 3, 2024
• Morningstar Korea Lifetime Allocation Aggressive 2035 Select Index	July 1, 2016	July 3, 2024
• Morningstar Korea Lifetime Allocation Aggressive 2040 Select Index	July 1, 2016	July 3, 2024
• Morningstar Korea Lifetime Allocation Aggressive 2045 Select Index	July 1, 2016	July 3, 2024
• Morningstar Korea Lifetime Allocation Aggressive 2050 Select Index	July 1, 2016	July 3, 2024
• Morningstar Korea Lifetime Allocation Aggressive 2055 Select Index	July 1, 2016	July 3, 2024
• Morningstar Korea Lifetime Allocation Aggressive 2060 Select Index	Jun 30, 2016	Dec 8, 2025
• Morningstar Korea Lifetime Allocation Aggressive Retirement Select Index	July 1, 2016	July 3, 2024

The performance start date represents when the first back-tested index value was calculated.

Index Construction

Methodology Summary

Starting Universe

- Select required asset class exposure using Morningstar Indexes:
 - Morningstar Korea 1-20 Year Treasury Bond Index
 - Morningstar Global Treasury Bond Index
 - Morningstar Emerging Markets Sovereign Bond Index
 - Morningstar Developed Markets Index
 - Morningstar Emerging Markets Index

Eligibility

- Model the efficient frontier and construct the asset class allocation glidepaths according to capital markets assumptions, human capital, financial and time horizon

Portfolio Construction

- Adjust weighted asset class exposure to reduce risk over time according to glidepaths
- Rebalance underlying index weights monthly on last business day to maintain asset allocations according to glidepaths
- Reconstitute index weights annually in June to reflect updated glidepath assumptions

**Morningstar Korea
Lifetime Allocation
Aggressive Select
Indexes**

Starting Universe

Morningstar Indexes are selected as constituents for the Morningstar Korea Lifetime Allocation Aggressive Select Indexes, which are designed specifically for Korean target-date investors. The security selection for each Morningstar index is defined by the rules-based methodology applicable to each underlying Morningstar index in the constituents list.

Asset Allocation

The asset allocation methodology provides the optimal portfolio of equities and fixed income to achieve the investment objectives for each target-date time horizon, known as a vintage.

Morningstar's approach to target-date benchmarks is to allocate the majority of assets to equities in the accumulation phase, with the remainder in various interest-bearing assets such as bonds. The percentage in equities reduces over time and gets allocated to lower-risk asset classes as the investor nears retirement. This adjustment in asset-class exposure over time is referred to as a glidepath. Korea government household statistics related to income and net assets, known as human capital assumptions, and expected market returns and risks by asset class (on a Korean won basis), known as capital markets assumptions, are incorporated into the asset allocation glidepath. This is further tailored according to overall risk level and investor risk capacity.

The asset allocations for the target-date glidepaths are reviewed and reconstituted annually according to research informed by human capital and capital markets assumptions. Market data assumptions as of March of the current year are used in asset allocation during reconstitution. Annual adjustments designed to reduce risk over time is the central theme of a target-date index.

The Morningstar Korea Lifetime Allocation Aggressive Select Indexes are constructed with an asset allocation aligned to the aggressive risk capacity level.

Number of Constituents

The constituent indexes are listed in [Appendix 3](#).

Index Weighting

The weights of each underlying Morningstar index are set according to the asset allocation glidepath for each vintage. Once set, the indexes will maintain a static asset allocation until the annual reconstitution adjustments are received from Morningstar Investment Management to support the updated target-date glidepaths.

Index Maintenance and Calculation

Reconstitution and Rebalancing

Annual Reconstitution

Each index in the series is reconstituted annually and implemented after the close of business on the last working day of June and is effective the following business day.

Monthly Rebalance

Each index is rebalanced monthly and implemented after the close of business on the last working day of the month and is effective the following business day.

Refer to for details on reconstitution and rebalancing.

Index files are published according to the global calendar schedule. For more information, please refer to the [Morningstar Indexes Holiday Calendar](#).

Index Calculation and Price Data

Multi-Asset indexes follow the general global equity index calculation approach described in the [Morningstar Indexes Calculation Methodology](#).

The Gross Return (GR) index series reflects the changes in both prices and reinvestment of income paid by the index constituents. It is the weighted average of its constituent security total returns, based on the constituent weightings at the beginning of the period.

The Net Return (NR) index series reflects the price performance, plus the net amount of all special and regular dividends after applying an assumed foreign tax withholding rate.

Methodology Review and Index Decommissioning Policy

The index methodology is continually reviewed to ensure it achieves all stated objectives. These reviews consider corporate action treatment, selection, and maintenance procedures. Subscribers to the index will be notified before any methodology changes are made. For more details, refer to the [Morningstar Index Methodology Change Policy](#).

Morningstar Indexes notifies all subscribers and stakeholders of the index that circumstances might arise that require a material change to, or a possible cessation of, the index. These circumstances are generally not within Morningstar's control and may include significant changes to the underlying market structure, inadequate access to necessary data, geo-political events, and regulatory changes. In addition, factors such as low usage or methodology convergence may result in the cessation of an index.

Because the cessation of the index or benchmark index could disrupt subscriber products that reference this index, all subscribers are encouraged to have robust fallback procedures if an index is terminated. For more details, refer to the [Morningstar Index Decommissioning Policy](#).

Data Correction and Precision

Intraday Index Data Corrections

Commercially reasonable efforts are made to ensure the accuracy of data used in real-time index calculations. If incorrect price or corporate action data affects index calculations, corrections are applied prospectively.

Index-Related Data and Divisor Corrections

Incorrect pricing and corporate action data for individual issues in the database will generally be corrected upon detection. In addition, an incorrect divisor of an index, if discovered within two days of its occurrence, will be fixed retroactively on the day it is discovered to prevent an error from being carried forward. Commercially reasonable efforts are made to correct an older error subject to its significance and feasibility.

For more details, refer to the [Recalculation Guidelines](#).

Exceptions

While Morningstar will seek to apply the method described above, the market environment, supervisory, legal, financial, or tax reasons may require an alternative approach to be adopted. A decision to take an alternative approach will be made by the relevant Morningstar Indexes Methodology Committee, and in all instances, the application of a nonstandard process will be reported to the Morningstar Indexes Oversight Committee.

Appendixes

Appendix 1: Modifications to the Rulebook

Section	Description of Change	Update Date
Entire Rulebook	Minor formatting changes Removed the Computational and Reporting Precision Section Changed domestic fixed income component from the Morningstar Korea Treasury Bond Index to the Morningstar Korea 1-20 Year Treasury Bond Index	July 2025
Entire Rulebook	Index name changed from Morningstar Korea Lifetime Allocation Aggressive Index series to Morningstar Korea Lifetime Allocation Aggressive Select Index series	October 2025
Entire Rulebook	Added index rules for the Morningstar Korea Lifetime Allocation Aggressive 2060 Select Index	December 2025

Appendix 2: Glossary

Terms	Description
Reconstitution	During each reconstitution, the membership is reset and the index weight of each constituent is adjusted.
Rebalance	During each rebalance, the weights are reset.

Appendix 3: Constituent Indexes

The constituent indexes of the Morningstar Korea Lifetime Allocation Aggressive Select Indexes are listed below and are subject to their own rules, which can be found on the Morningstar Indexes [website](#).

The Korea Lifetime Allocation Aggressive Select Indexes are calculated in KRW.

Indexes	Constituent Morningstar Indexes
Morningstar Korea Lifetime Allocation Aggressive Select Indexes	Morningstar Developed Markets NR KRW Index
	Morningstar Emerging Markets NR KRW Index
	Morningstar Global Treasury Bond GR Hedged KRW Index
	Morningstar Emerging Markets Sovereign Bond GR Hedged KRW Index
	Morningstar Korea 1-20 Year Treasury Bond GR KRW Index

About Morningstar Indexes

Morningstar Indexes was built to keep up with the evolving needs of investors—and to be a leading-edge advocate for them. Our rich heritage as a transparent, investor-focused leader in data and research uniquely equips us to support individuals, institutions, wealth managers, and advisors in navigating investment opportunities across major asset classes, styles, and strategies. From traditional benchmarks and unique IP-driven indexes to index design, calculation, and distribution services, our solutions span an investment landscape as diverse as investors themselves.

Morningstar Index Methodology Committee

The Morningstar Index Methodology Committee oversees all new index development, index methodology changes, and cessation of indexes for any indexes where Morningstar owns the intellectual property. This committee is also charged with ensuring that indexes align with Morningstar Research principles and values. The group comprises members of the index team with index research, product development, product management, client service, index implementation, and operation expertise who provide the first layer of governance over index design and methodology.

Morningstar Index Operations Committee

The Morningstar Index Operations Committee governs the processes, systems, and exception handling of the day-to-day management of all live indexes, including index rebalancing and reconstitution, restatements, market classification, and contingency management. The committee oversees the annual review of index methodology (as required by U.K. and EU benchmark regulations, or BMR), ensuring that methodologies remain fit for purpose and continue to achieve their stated investment objectives. The group comprises members of the index team with data, operations, corporate actions, product development, index launch, client service, and index management experience who provide the first layer of governance over index operations.

Morningstar Index Oversight Committee

The Morningstar Index Oversight Committee is responsible for the index oversight function as per the requirements of the U.K. and European BMR, providing independent oversight of all aspects of the governance of benchmark administration as required by the relevant BMR. Its remit extends to all calculation and administration-related business activities of Morningstar Indexes, including administration of Morningstar-owned benchmarks as well as client-owned benchmarks and index calculation. The oversight function is part of the organizational structure of Morningstar but is separate and independent from the index business, index management, and the other index committees.

www.indexes.morningstar.com

Contact Us

indexes@morningstar.com

The information in this document is the property of Morningstar, Inc. Reproduction or transcription by any means, in whole or part, without the prior written consent of Morningstar, Inc., is prohibited. While data contained in this report are gathered from reliable sources, accuracy and completeness cannot be guaranteed. All data, information, and opinions are subject to change without notice. This document may contain back-tested or simulated performances, and the subsequent results achieved by the investment strategy may be materially different.