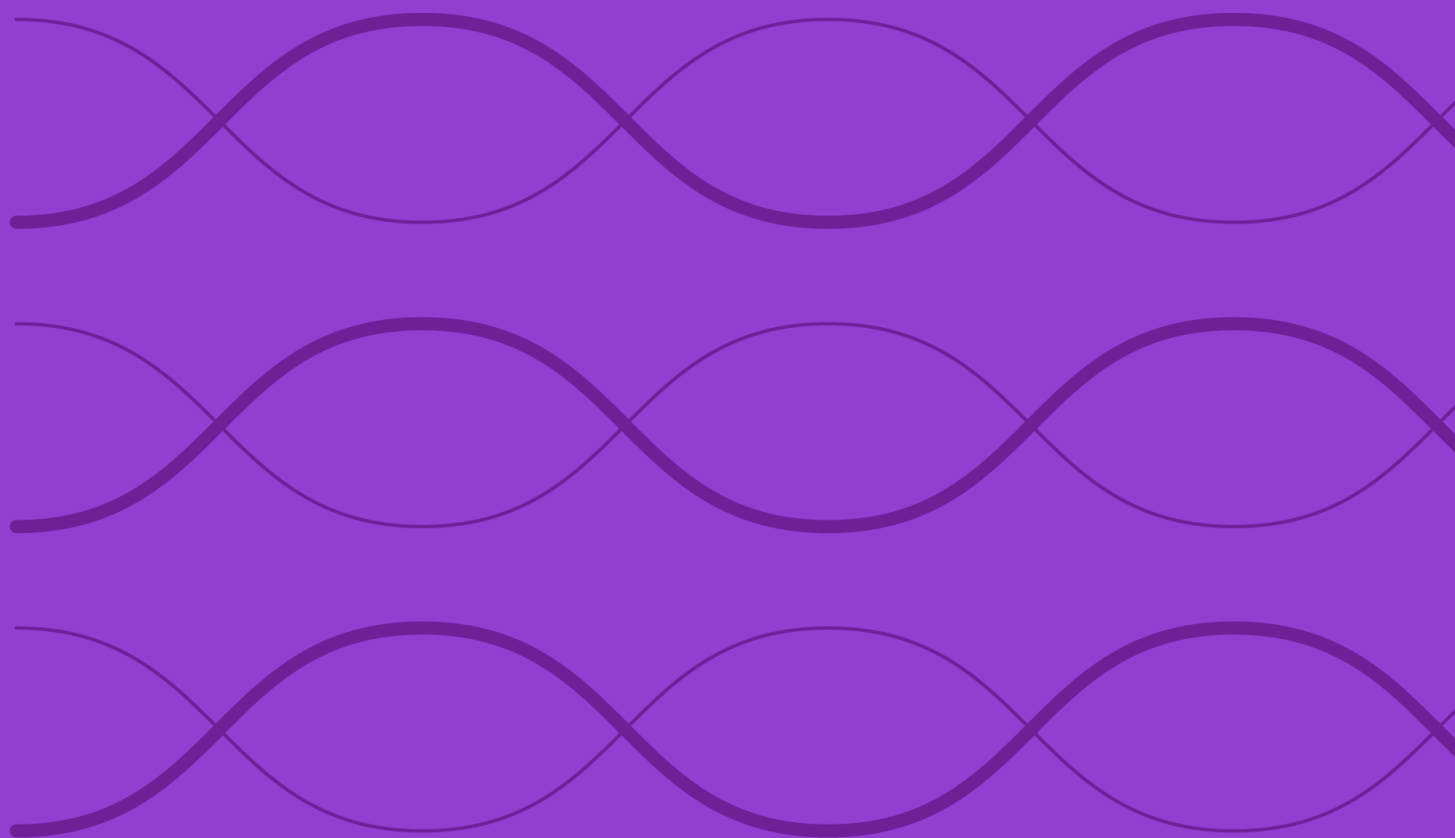


# Construction Rules for the Morningstar<sup>®</sup> Europe Basic Materials Select 10 Equal Weight<sup>SM</sup>



<b>Overview</b>	<b>3</b>
<b>Index Construction</b>	<b>4</b>
Methodology Summary	4
Starting Universe	4
Eligibility	4
Portfolio Construction	5
<b>Index Maintenance and Calculation</b>	<b>6</b>
Reconstitution and Rebalancing	6
Corporate Actions	6
Index Calculation and Price Data	6
<b>Methodology Review and Index Cessation Policy</b>	<b>7</b>
<b>Data Correction and Precision</b>	<b>8</b>
Intraday Index Data Corrections	8
Index-Related Data and Divisor Corrections	8
<b>Exceptions</b>	<b>8</b>
<b>Appendixes</b>	<b>9</b>
Appendix 1: Glossary	9
Appendix 2: Morningstar® Europe Basic Materials Select 10 Equal Weight Decrement Indexes	9
Appendix 3: Decrement Levels	9
<b>About Morningstar Indexes</b>	<b>11</b>

## Overview

The Morningstar Europe Basic Materials Select 10 Equal Weight Index is designed to target specific regional exposure to the Developed European markets while achieving exposure to the Basic Material sectors.

This index does not incorporate environmental, social, or governance criteria.

## Index Inception and Performance Start Date

The index inception date is March 27, 2025 and the performance start date, when the first back-tested index value was calculated, is June 20, 2008.

## Index Construction

### Methodology Summary

#### Starting Universe

- Morningstar Developed Markets Europe Index

#### Eligibility

- Stocks from the following regions are selected
  - Eurozone
  - UK
- Stocks from the following sector are selected
  - Basic Materials
- Stocks from the following industry groups are excluded
  - Agriculture
  - Chemicals

#### Portfolio Construction

- The 10 largest stocks by free float market capitalization are selected
- The number of stocks from the UK is capped at 4
- An Equal Weighting scheme is applied

Morningstar® Europe  
Basic Materials Select  
10 Equal Weight

### Starting Universe

At each reconstitution, constituents of the Morningstar® Europe Basic Materials Select 10 Equal Weight are derived from the Morningstar Developed Markets Europe Index (benchmark). For more details on benchmark construction, refer to the construction rules for the [Morningstar Developed Markets Europe Index](#).

### Eligibility

To be eligible for index inclusion, all constituents must meet the following criteria:

- All constituents must be from the following regions
  - Eurozone
  - UK
- All constituents must be from the following sector<sup>1</sup> as defined by Morningstar GECS
  - Basic Materials
- All constituents from the following Industries<sup>1</sup> as defined by Morningstar GECS must be excluded
  - Agriculture

<sup>1</sup> Morningstar GECS is periodically reviewed and updated, so for maintaining representativeness and continuity of the history for the index strategy, these changes may be backfilled retrospectively where appropriate for indexes created after the effective date of such changes.

- Chemicals

### **Portfolio Construction**

- Select the top 10 stocks by free float market cap
  - Of which a maximum of 4 can be UK stocks.
- Apply an equal weighting scheme to the securities

### *Number of Stocks*

The indexes target a fixed number of stocks based on a transparent ranking system subject to the application of eligibility criteria at reconstitution. However, if fewer than the targeted number of securities from the starting universe meet eligibility criteria, or if securities are added or deleted as a result of corporate actions after reconstitution, the constituent count may deviate from the targeted number. During reconstitution, if the number of eligible securities is less than the targeted constituent count, all eligible securities are selected. The reconstitution schedule is provided in the "Index Maintenance and Calculation" section. The target count for this index is 10.

### *Index Weighting*

The index is equal weighted. For more details, refer to the [Morningstar Indexes Calculation Methodology rulebook](#).

## Index Maintenance and Calculation

### Reconstitution and Rebalancing

The index is reconstituted, where the membership is reset, semi-annually on the third Friday of June and December. Adjustments are implemented after Friday's market close and reflected the following Monday. If Monday is an index holiday, reconstitution is reflected the next business day. The market data used for reconstitution is as of the last trading day of April and October.

The index is rebalanced quarterly on the third Friday of March, June, September, and December. Adjustments are implemented after Friday's market close and reflected the following Monday. If Monday is an index holiday, the rebalance is reflected the next business day. The market data used for rebalancing is as of the last trading day of February, May, August, and November.

Index files are published according to the Global calendar schedule. For more information, please refer to the [Morningstar Indexes Holiday Calendar](#).

### Corporate Actions

The treatment of corporate actions will be as per the alternatively-weighted indexes corporate action methodology. For more details, please refer to the [Morningstar Indexes Corporate Actions Methodology](#).

### Index Calculation and Price Data

Details about index calculations and price data can be found in their respective rulebooks: [Morningstar Indexes Calculation Methodology](#) and [Morningstar Equity Indexes Price Methodology](#).

### **Methodology Review and Index Cessation Policy**

The index methodology is continually reviewed to ensure it achieves all stated objectives. These reviews consider corporate action treatment, eligibility requirements, and maintenance procedures. Subscribers to the index will be notified before any methodology changes are made. For more details, refer to the [Morningstar Indexes Methodology Change Policy](#).

Morningstar Indexes notifies all subscribers and stakeholders of the index that circumstances might arise that require a material change to, or a possible cessation of, the index. These circumstances are generally not within Morningstar's control and may include significant changes to the underlying market structure, inadequate access to necessary data, geo-political events, and regulatory changes. In addition, factors such as low usage or methodology convergence may result in the cessation of an index.

Because the cessation of the index or benchmark index could disrupt subscriber products that reference this index, all subscribers are encouraged to have robust fallback procedures if an index is terminated. For more details, refer to the [Morningstar Index Cessation Process](#).

## Data Correction and Precision

### Intraday Index Data Corrections

Commercially reasonable efforts are made to ensure the accuracy of data used in real-time index calculations. If incorrect price or corporate action data affects index calculations, corrections are applied prospectively.

### Index-Related Data and Divisor Corrections

Incorrect pricing and corporate action data for individual issues in the database will generally be corrected upon detection. In addition, an incorrect divisor of an index, if discovered within two days of its occurrence, will be fixed retroactively on the day it is discovered to prevent an error from being carried forward. Commercially reasonable efforts are made to correct an older error subject to its significance and feasibility.

For more details, refer to the [Recalculation Guidelines](#).

### Exceptions

While Morningstar will seek to apply the method described above, the market environment, supervisory, legal, financial, or tax reasons may require an alternative approach to be adopted. A decision to take an alternative approach will be made by the relevant Morningstar Index Methodology Committee, and in all instances, the application of a nonstandard process will be reported to the Morningstar Index Oversight Committee.



## Appendixes

### Appendix 1: Glossary

Terms	Description
Reconstitution	During each reconstitution, the steps mentioned in the index construction process are performed, resulting in membership reset.
Rebalance	During each rebalancing, the weights are adjusted for updated free-float and shares outstanding data.

### Appendix 2: Morningstar® Europe Basic Materials Select 10 Equal Weight Decrement Indexes

Index Name	Underlying Index	Base value	Base Date	Performance Inception Date	Inception Date
Morningstar® Europe Basic Materials Select 10 Equal Weight Decrement 50 Point GR	Morningstar® Europe Basic Materials Select 10 Equal Weight GR	840	Mar. 26, 2025	Jun. 20, 2008	Mar. 27, 2025
Morningstar® Europe Basic Materials Select 10 Equal Weight Decrement 5% NR	Morningstar® Europe Basic Materials Select 10 Equal Weight NR	1000	Jun. 20, 2008	Jun. 20, 2008	Mar. 27, 2025

### Appendix 3: Decrement Levels

The index levels are adjusted by deducting a predetermined value of index points from the gross return, or GR, or fixed percentage point from the net return, or NR, levels of the base index. These constant markdowns are applied to the base index daily.

Return Variant of the Base Index	Base Currency	Decrement Type	Decrement Frequency	Decrement Application	Decrement Value	Day Count Convention
Net Total Return Gross Total Return	EUR	Fixed Percentage Decrement or Fixed Point Decrement based on the index version.	Daily	Geometric application for both decrement types.	5% decrement based on the Net Total Return 50-point decrement based on Gross Total Return	*ACT/365

\*ACT is the number of calendar days between two calculation days.

#### Formula for Fixed Point Decrement Geometric Decrement Calculation

$$IV_t = (IV_{t-1} \times (U_t \div U_{t-1})) - (D \times (Act(t-1, t) \div DayCount))$$

Where:

$IV_t$  = The value of the Fixed Point Decrement Index for calculation day  $t$

$IV_{t-1}$  = The value of the Fixed Point Decrement Index for day  $t-1$   
 $U_t$  = The value of the base Index for calculation day  $t$

$U_{t-1}$  = The value of the base Index for calculation day t-1  
 $Act(t-1,t)$  = Number of calendar days between calculation day t-1 and calculation day t  
 $D$  = The Decrement value expressed in Index points  
 $DayCount$  = Set to 365

**Formula for Fixed Percentage Decrement  
Geometric Decrement Calculation**

$$IV_t = IV_{t-1} \times ((U_t \div U_{t-1}) - (c \times (Act(t-1,t) \div DayCount))$$

Where:

$IV_t$  = The value of the Fixed Percentage Decrement Index for calculation day t

$IV_{t-1}$  = The value of the Fixed Percentage Decrement Index for day t-1

$U_t$  = The value of the base Index for calculation day t

$U_{t-1}$  = The value of the base Index for calculation day t-1

$Act(t-1,t)$  = Number of calendar days between calculation day t-1 and calculation day t

$c$  = The Decrement value expressed in Fixed Percentage

$DayCount$  = Set to 365

## About Morningstar Indexes

Morningstar Indexes was built to keep up with the evolving needs of investors—and to be a leading-edge advocate for them. Our rich heritage as a transparent, investor-focused leader in data and research uniquely equips us to support individuals, institutions, wealth managers, and advisors in navigating investment opportunities across major asset classes, styles, and strategies. From traditional benchmarks and unique IP-driven indexes to index design, calculation, and distribution services, our solutions span an investment landscape as diverse as investors themselves.

## Morningstar Index Methodology Committee

The Morningstar Index Methodology Committee oversees all new index development, index methodology changes, and cessation of indexes for any indexes where Morningstar owns the intellectual property. This committee is also charged with ensuring that indexes align with Morningstar Research principles and values. The group comprises members of the index team with index research, product development, product management, client service, index implementation, and operation expertise who provide the first layer of governance over index design and methodology.

## Morningstar Index Operations Committee

The Morningstar Index Operations Committee governs the processes, systems, and exception handling of the day-to-day management of all live indexes, including index rebalancing and reconstitution, restatements, market classification, and contingency management. The committee oversees the annual review of index methodology (as required by U.K. and EU benchmark regulations, or BMR), ensuring that methodologies remain fit for purpose and continue to achieve their stated investment objectives. The group comprises members of the index team with data, operations, corporate actions, product development, index launch, client service, and index management experience who provide the first layer of governance over index operations.

## Morningstar Index Oversight Committee

The Morningstar Index Oversight Committee is responsible for the index oversight function as per the requirements of the U.K. and European BMR, providing independent oversight of all aspects of the governance of benchmark administration as required by the relevant BMR. Its remit extends to all calculation and administration-related business activities of Morningstar Indexes, including administration of Morningstar-owned benchmarks as well as client-owned benchmarks and index calculation. The oversight function is part of the organizational structure of Morningstar but is separate and independent from the index business, index management, and the other index committees.

[www.indexes.morningstar.com](http://www.indexes.morningstar.com)

## Contact Us

[indexes@morningstar.com](mailto:indexes@morningstar.com)

The information in this document is the property of Morningstar, Inc. Reproduction or transcription by any means, in whole or part, without the prior written consent of Morningstar, Inc., is prohibited. While data contained in this report are gathered from reliable sources, accuracy and completeness cannot be guaranteed. All data, information, and opinions are subject to change without notice. This document may contain back-tested or simulated performances, and the subsequent results achieved by the investment strategy may be materially different.